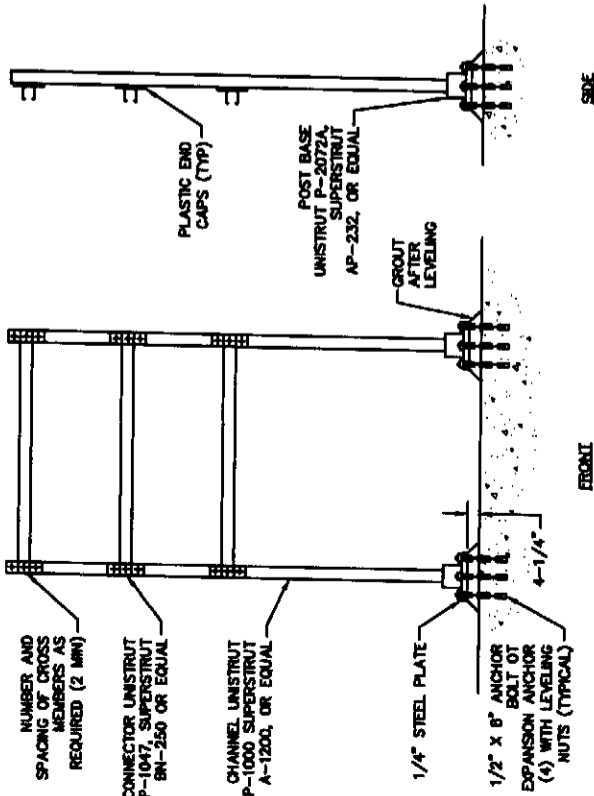


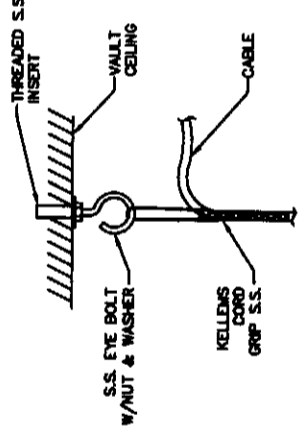
- NOTES:**
1. MAINTAIN 12" MIN. SEPARATION BETWEEN AC & DC OR SIGNAL CONDUITS.
 2. PROVIDE 2" SEPARATION BETWEEN MULTIPLE CONDUITS AND NEAREST SIDEWALL.
 3. TRENCH WIDTH TO BE AS REQUIRED TO ACCOMMODATE ALL CONDUITS/SERVICES.
 4. BACKFILL IN ACCORDANCE WITH UTILITY TRENCHING STANDARDS.
 5. CONDUIT SHALL BE BEDDED W/SAND (3" BASE & 3" COVER).
 6. SEE CONDUIT SCHEDULE FOR CONDUIT QUANTITY AND SIZE.

RACEWAY DETAIL
SCALE: NONE

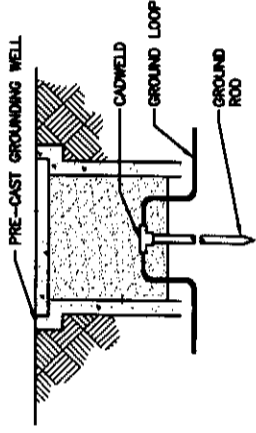


- NOTES:**
1. RACK CHANNELS AND FITTINGS SHALL BE GALVANIZED STEEL.

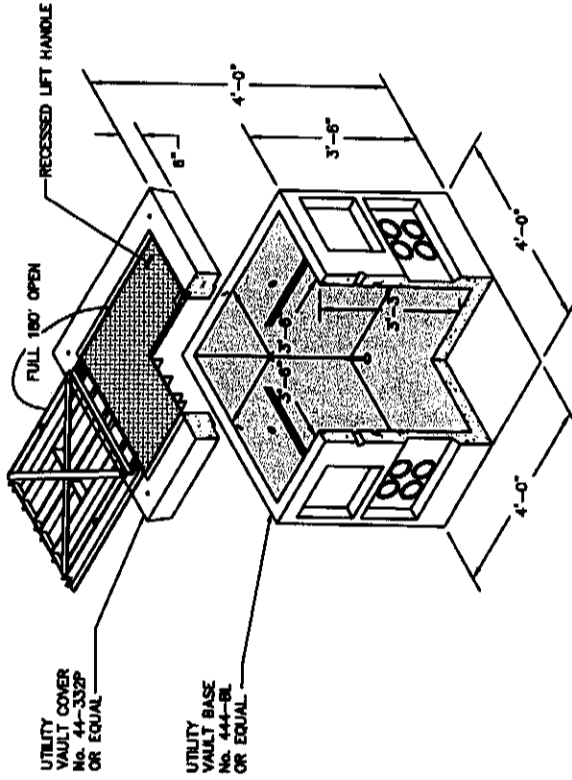
EQUIPMENT RACK
SCALE: NONE



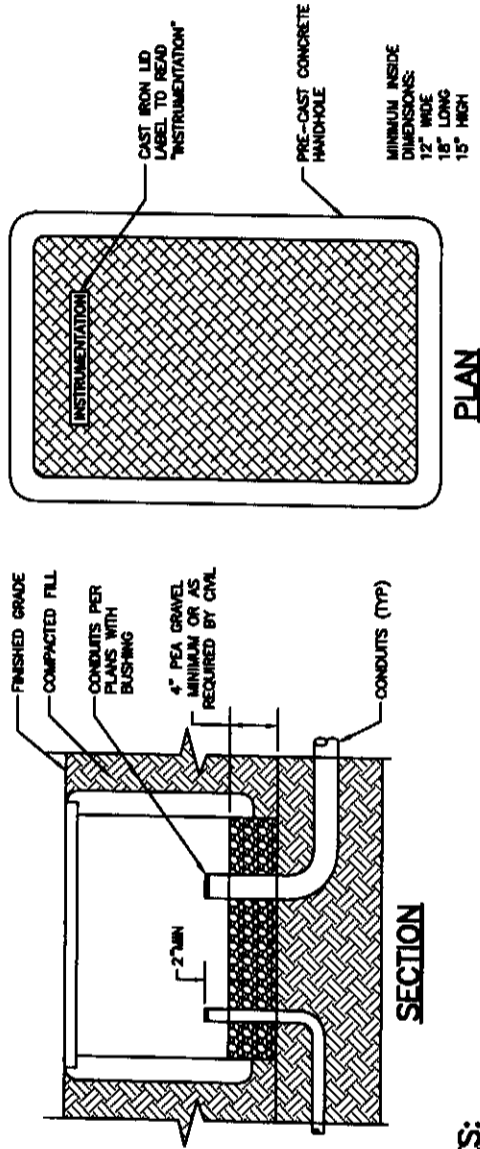
CABLE GRIP DETAIL
SCALE: NONE



CONCRETE ENCASED GROUND ROD DETAIL
SCALE: NONE

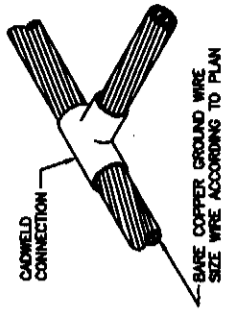


POWER HANDHOLE DETAIL
SCALE: NONE

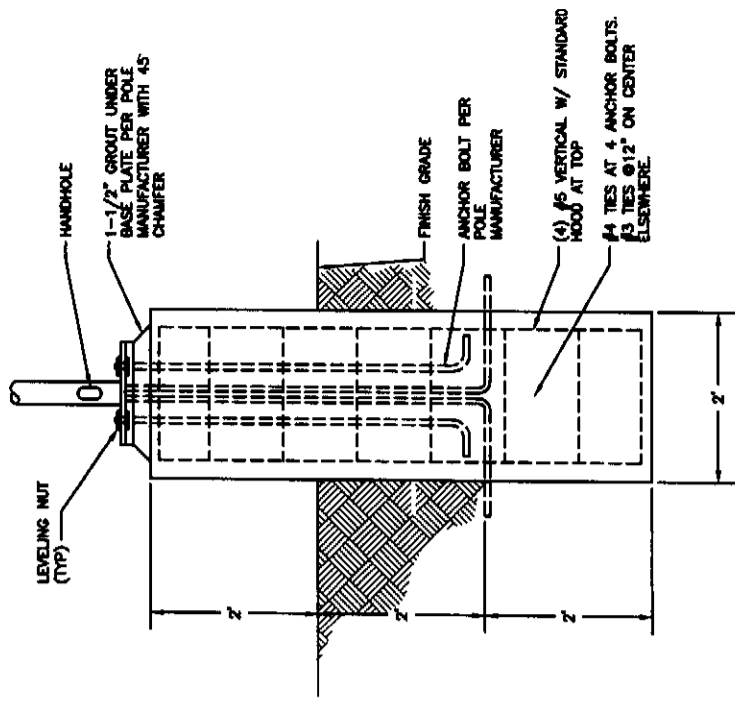


- NOTES:**
1. LD RATING IN VEHICULAR TRAFFIC AREAS: H-20
 2. LD RATING IN INCIDENTAL VEHICULAR TRAFFIC AREAS: H-10
 3. LD RATING IN NON VEHICULAR TRAFFIC AREAS: DESIGN FOR PURPOSE

INSTRUMENTATION HANDHOLE DETAIL
SCALE: NONE



CADWELD DETAIL
SCALE: NONE



LIGHT POLE BASE DETAIL
SCALE: NONE

GENERAL NOTES

DESIGNED BY	BZ
DRAWN BY	FSM
CHECKED BY	SE
APPROVED BY	DAB
DATE PRINTED	SEPT 2007
SCALE	AS SHOWN
P.L. NO.	

HAMMOND COLLIER
WADE LIVINGSTONE

SEATTLE (206) 632-2664
OMAK (509) 826-5861
WENATCHEE (509) 662-1762
LAKEWOOD (253) 472-3192

CITY OF ENTIAI
2007 WASTEWATER TREATMENT
FACILITIES IMPROVEMENTS

ELECTRICAL DETAILS

JOB NO. 052304-03
DRAWING NO. E2
SHEET OF



